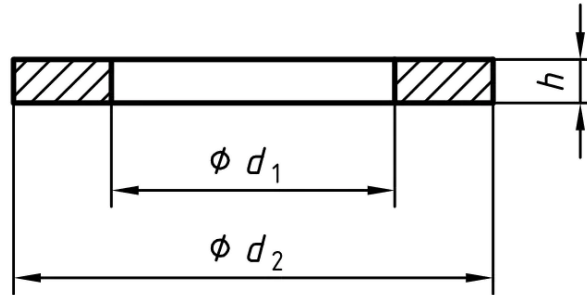


Basic dimensions for Form A Washers (BS 4320 DIN 125 Part 1)



BS 4320 / DIN 125-1: Basic dimensions Form A washers for selected sizes

Nominal size	Inside diameter (d1)			Outside diameter (d2)				Thickness (s)	
	min.	BS 4320 max.	DIN 125-1 max.	BS4320 min.	BS 4320 max.	DIN 125-1 min.	DIN 125-1 max.	min.	max.
M5	5.3	5.5	5.48	9.7	10	9.64	10	0.9	1.1
M6	6.4	6.7	6.62	12.1	12.5	11.57	12	1.4	1.8
M8	8.4	8.7	8.62	16.6	17	15.57	16	1.4	1.8
M10	10.5	10.9	10.77	20.5	21	19.48	20	1.8	2.2
M12	13.0	13.4	13.27	23.5	24	23.48	24	2.3	2.7
M16	17.0	17.4	17.27	29.5	30	29.48	30	2.7	3.3
M20	21	21.5	21.33	36.2	37	36.38	37	2.7	3.3
M24	25	25.5	25.33	43.2	44	43.38	44	3.7	4.3

Dimensions in millimetres

Whilst the information is provided in good faith, Andrews Fasteners Ltd are not under any responsibility or liability in respect of errors or information that was found to be incorrect or for any reliance the user may place on it.

ANDREWS
FASTENERS